

Chapter 7. The CD-ROM

J. Ferlay

Content

This CD-ROM contains:

1. The age-specific and summary tables that appeared in printed form in previous volumes of *Cancer Incidence in Five Continents*, in PDF format. To view these documents, you must have Adobe® Acrobat® Reader™ or any other program able to read PDF files. Various versions of the Reader (for PC or Mac) can be downloaded free from the Internet at: <http://www.adobe.com/products/acrobat/>.

2. The *tabulated* raw data (no individual records) used to produce the book. The data are stored in the traditional form of number of cases by sex, five-year age group and cancer. They are recorded in the 'data' folder of the CD as a text file, in two different formats: formatted text (PRN) and comma-separated value (CSV). They can be easily incorporated into statistical packages for further analysis. In addition, the CD-ROM includes the data for 'all races combined' for the registries published by ethnic group or race (such as US, California, San Francisco or Singapore). Note that an 'all races' data-set does not necessarily correspond to the pooling of its sub-groups. The layout of the data files together with the cancer and the registry dictionaries are recorded in the 'data' folder of the CD-ROM as text files.

3. Windows™-based programs called *CI5VIII* and *CI5VII* to analyse the data contained in the present and in the previous volume of the series.

See also Figure 7.1.

Instructions

You may read or copy the data or PDF files onto your computer for your own use. However, the CD-ROM also includes an Internet-type application to allow easy access to the PDF tables:

1. Insert the disk in your CD-drive.
2. Open your preferred Internet browser (such as Internet Explorer or Netscape).
3. Use the 'open' menu option and select the e:\ci5v8.htm file (e being the letter that identifies your CD-ROM drive: change according to your own system).
4. Select the option you wish from the menu bar.

The 'pdf' directory

The 'age-spec' folder contains the age-specific tables that were printed in previous volumes of *Cancer Incidence in Five Continents*.

The '4digit' folder contains age-standardized incidence rates (four-digit rubrics), by sex, for the following cancer sites:

C01–06	Mouth
C07–08	Salivary glands
C12–13	Hypopharynx
C15	Oesophagus
C16	Stomach
C18	Colon

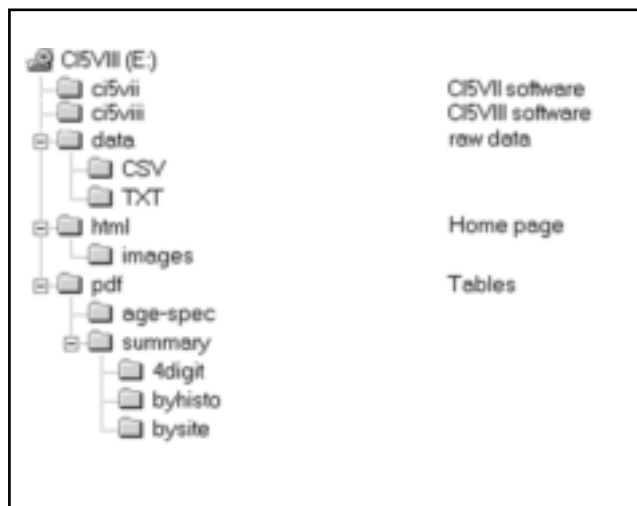


Figure 7.1. Structure of the CD

C19–21	Rectum
C23–24	Gallbladder etc.
C30–31	Nose, sinuses etc.
C33–34	Trachea, bronchus and lung
C37–38	Other thoracic organs
C40	Bone of limbs
C41	Other bones
C43	Melanoma of skin
C46	Kaposi sarcoma
C47+C49	Connective and soft tissue
C57	Female genital organs
C70–72	Brain and central nervous system
C82–85, C96	Non-Hodgkin lymphoma
C81	Hodgkin disease
C91	Lymphoid leukaemia
C92–94	Myeloid leukaemia

The 'byhisto' folder contains summary tables showing the percentage distribution of microscopically verified cases by histological type (both sexes combined) for the following cancer sites (see Chapter 4):

C15	Oesophagus
C21	Anus
C22	Liver
C34	Lung
C40+C41	Bone
C53	Cervix uteri
C54	Corpus uteri
C56	Ovary
C62	Testis
C67	Bladder

C69	Eye
C70-72	Brain and central nervous system
C73	Thyroid
C81	Hodgkin disease
C91-94	Lymphoid and myeloid leukaemias

The 'bysite' folder contains summary tables showing the percentage distribution of microscopically verified cases by sites (both sexes combined) for the following histological groups (see Chapter 4):

- Fibrosarcoma and liposarcoma
- Leiomyosarcoma
- Rhabdomyosarcoma
- Angiosarcoma
- Kaposi sarcoma
- Mesothelioma

Only cancer registries that provided data originally coded to ICD-O topography and morphology are included in the tables by site.

CI5VIII

The printed volume presents results in a fixed format and level of detail. With the present software users can examine the data with more flexibility and in greater detail than in the printed tables. The data are stored in the traditional form of number of cases by sex

and five year age groups. The standard three-character ICD-10 anatomical sites have been replaced by a set of 252 categories based on a combination of ICD-10 three-or four-character site codes and ICD-O-2 morphological groups (see Table 1). The user can also create his own groupings, both of registry populations, and of diagnostic units, which are then retained in the database.

There is considerable flexibility too in defining the items and ranges to be calculated, thus the usual summary rates (crude, cumulative, world and European age-standardized) can be calculated over any chosen age range. The software also performs some elementary statistical tests, e.g., for homogeneity, trend and significance of the ratio of age-specific rates from two populations.

Finally, the software has inbuilt graphic capabilities for displaying age-specific rates as line graphs and the summary rates as bar charts; both may be exported as bitmap or JPEG files to a suitable software for reproduction (Figure 7.2).

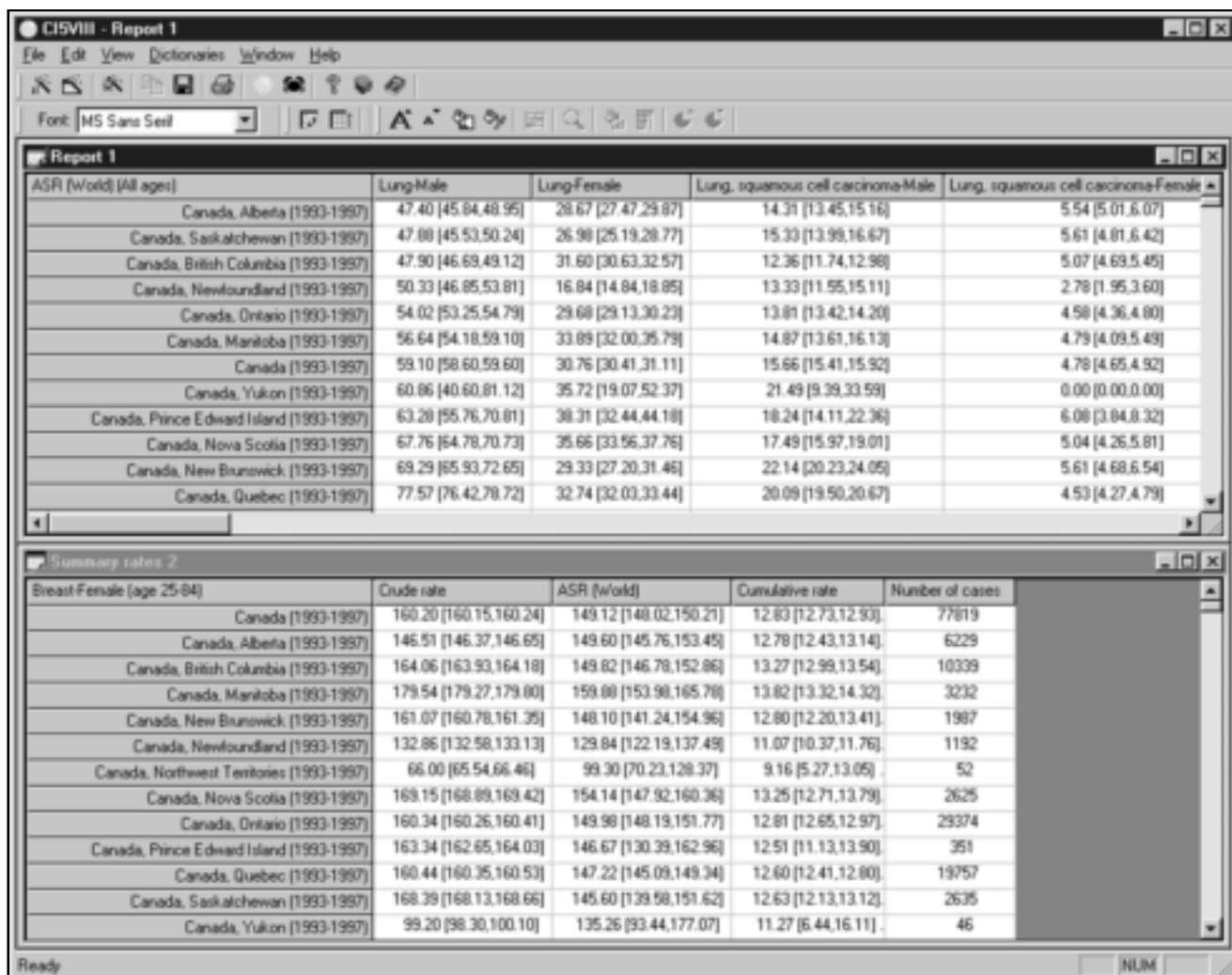
System requirements

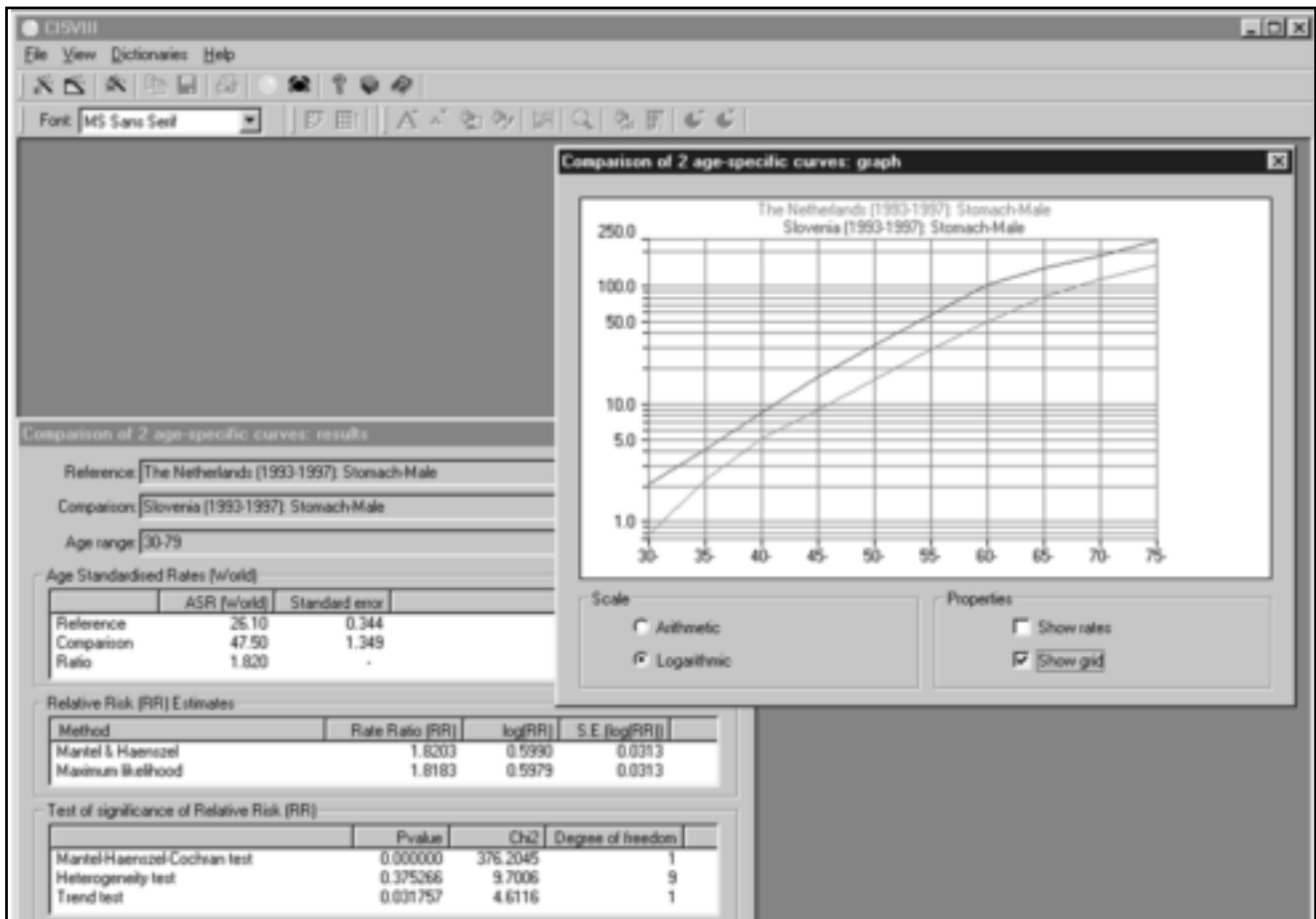
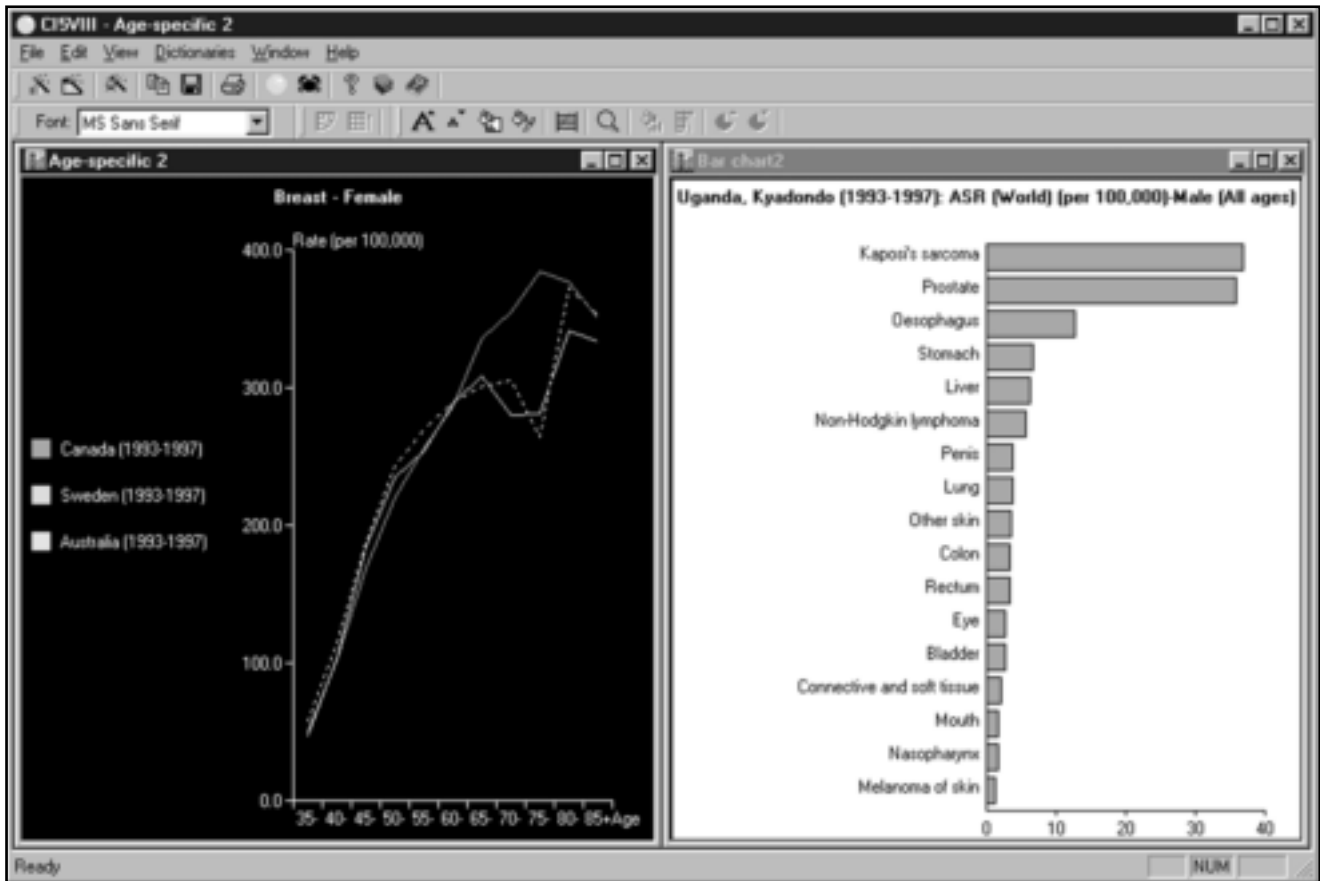
1. A PC running Microsoft Windows™ 95/98/Me/NT/2000/XP
2. Microsoft Windows™ NT/2000/XP recommended
3. 64 Mb of RAM recommended
4. 25 Mb hard-disk space required

Installation

1. Insert the disk in your CD-drive.

Figure 7.2. Examples of outputs produced using CI5VIII





2. Double-click the e:\ci5viii\setup.exe file (e being the letter that identifies your CD-ROM drive: change according to your own system).

3. Follow the instructions on the screen.

The installation procedure copies the program and all the necessary data files (so-called 'database') into a specific binary file so that **CI5VIII** can run without the CD-ROM.

CI5VII

This version 2 of the **CI5VII** software (Ferlay *et al.*, 1997) contains the data published in *Cancer Incidence in Five Continents* Volume VII (Parkin *et al.*, 1997), with the data converted into ICD-10, so that the cancer dictionary is similar to that used in volume VIII (see above). **CI5VII** version 2 has the same Windows™ interface and capabilities as **CI5VIII**, but there are some differences in the databases between **CI5VII** versions 1 and 2:

1. The list of cancer registries is not presented in the same order. In addition, some cancer registry groups (such as Singapore or Kuwait) have been added in version 2 to maintain consistency between **CI5VII** and **CI5VIII**.

2. Data in Volume VII were published according to ICD-9. The cancer sites are now defined by the ICD-10 codes, so that some cancers (such as lung, kidney etc.) are not truly comparable. In addition, depending on the original coding system used in the cancer registries, some entities cannot be allocated:

- For those cancer registries providing morphological data coded to a system other than ICD-O, some morphological terms may not be available.

- Some ICD-10 sites, such as C64 (kidney) or C65 (renal pelvis), may not be available for those registries providing data coded originally to ICD-9 topography (three-digit only).

3. The errors detected after the publication of *Cancer Incidence in Five Continents* Vol. VII have been corrected in this version of **CI5VII**. These errors are indicated at the end of the present book.

The system requirements and the installation procedure are identical to those for **CI5VIII**.

References

Ferlay, J., Black, R.J., Whelan, S.L. & Parkin, D.M. (eds) (1997) *CI5VII: Electronic Database of Cancer Incidence in Five Continents, Vol. VII* (IARC CancerBase No. 2), Lyon, IARC Press

Parkin, D.M., Whelan, S.L., Ferlay, J., Raymond, L., and Young, J., eds (1997) *Cancer Incidence in Five Continents, Vol. VII* (IARC Scientific Publications No. 143), Lyon, IARC Press

Table 1. List of cancers available in the *C15VII* and *C15VIII* programs.

001 All sites (C00–97)	062 Other carcinoma
002 All sites but skin (C00–97 but C44)	063 Unspecified carcinoma
003 Oral cavity and pharynx (C00–14)	064 Hepatoblastoma
004 Lip (C00)	065 Haemangiosarcoma
005 Tongue (C01–02)	066 Other sarcoma
006 Tongue, base of (C01)	067 Other morphology
007 Tongue, other and unspecified parts (C02)	068 Unspecified morphology
008 Mouth (C03–06)	069 Gallbladder (C23)
009 Mouth, gum (C03)	070 Other and unspecified parts of biliary tract (C24)
010 Mouth, floor of (C04)	071 Pancreas (C25)
011 Mouth, palate (C05)	072 Other and ill-defined digestive organs (C26)
012 Mouth, other and unspecified parts (C06)	073 Respiratory organs (C30–39)
013 Salivary glands (C07–08)	074 Nasal cavity and middle ear (C30)
014 Parotid gland (C07)	075 Accessory sinuses (C31)
015 Salivary glands, other and unspecified (C08)	076 Larynx (C32)
016 Tonsil (C09)	077 Trachea (C33)
017 Oropharynx (C10)	078 Lung (C34)
018 Nasopharynx (C11)	079 Squamous cell carcinoma
019 Pyriform sinus (C12)	080 Adenocarcinoma
020 Hypopharynx (C13)	081 Small cell carcinoma
021 Pharynx unspecified (C14)	082 Large and undifferentiated cell carcinoma
022 Digestive organs (C15–26)	083 Other carcinoma
023 Oesophagus (C15)	084 Unspecified carcinoma
024 Squamous cell carcinoma	085 Sarcoma
025 Adenocarcinoma	086 Other morphology
026 Other specified carcinomas	087 Unspecified morphology
027 Unspecified carcinoma	088 Thymus (C37)
028 Sarcoma	089 Heart, mediastinum and pleura (C38)
029 Other specified morphology	090 Other and unspecified respiratory and intrathoracic organs (C39)
030 Unspecified morphology	091 Bone (C40–41)
031 Upper third (C15.0,3)	092 Osteosarcoma
032 Middle third (C15.1,4)	093 Chondrosarcoma
033 Lower third (C15.2,5)	094 Ewing sarcoma
034 Other and unspecified parts (C15.8–9)	095 Fibrosarcoma
035 Stomach (C16)	096 Other specified sarcomas
036 Cardia (C16.0)	097 Unspecified sarcoma
037 Fundus (C16.1)	098 Other specified morphology
038 Body (C16.2)	099 Unspecified morphology
039 Pylorus and antrum (C16.3–4)	100 Bone of limbs (C40)
040 Other and unspecified parts (C16.5–9)	101 Other bones (C41)
041 Small intestine (C17)	102 Skin (C43–44)
042 Colon (C18)	103 Melanoma of skin (C43)
043 Right (C18.0–2)	104 Head (C43.0–4)
044 Transverse and flexures (C18.3–5)	105 Trunk (C43.5)
045 Descending (C18.6)	106 Upper limb (C43.6)
046 Sigmoid (C18.7)	107 Lower limb (C43.7)
047 Other and unspecified parts (C18.8–9)	108 Other and unspecified (C43.8–9)
048 Rectosigmoid junction (C19)	109 Other skin (C44)
049 Rectum (C20)	110 Mesothelial and soft tissues (C45–49)
050 Anus (C21)	111 Mesothelioma (C45)
051 Squamous cell carcinoma	112 Kaposi sarcoma (C46)
052 Basaloid and cloacogenic carcinomas	113 Peripheral nerves (C47)
053 Adenocarcinoma	114 Peritoneum and retroperitoneum (C48)
054 Other carcinoma	115 Connective and soft tissue (C49)
055 Unspecified carcinoma	116 Breast (C50)
056 Melanoma	117 Female genital organs (C51–58)
057 Other morphology	118 Vulva (C51)
058 Unspecified morphology	119 Vagina (C52)
059 Liver (C22)	120 Cervix uteri (C53)
060 Hepatocellular carcinoma	121 Squamous cell carcinoma
061 Cholangiocarcinoma	

Table 1 (Contd). List of cancers available in the *C15VII* and *C15VIII* programs.

122	Adenocarcinoma	182	Other carcinoma
123	Other carcinoma	183	Unspecified carcinoma
124	Unspecified carcinoma	184	Sarcoma
125	Sarcoma	185	Other morphology
126	Other morphology	186	Unspecified morphology
127	Unspecified morphology	187 Brain, central nervous system (C70–72)	
128 Corpus uteri (C54)		188	Astrocytic tumours
129	Adenocarcinoma	189	Oligodendroglial tumours and mixed gliomas
130	Other carcinoma	190	Ependymal tumours
131	Unspecified carcinoma	191	Gliomas of uncertain origin
132	Sarcoma	192	Medulloblastoma
133	Other morphology	193	Other embryonal tumours
134	Unspecified morphology	194	Choroid plexus tumours
135 Uterus unspecified (C55)		195	Neuronal and mixed neuronal-glial tumours
136 Ovary (C56)		196	Cranial nerves tumours
137	Serous carcinoma	197	Meningioma
138	Mucinous carcinoma	198	Soft tissue tumours
139	Endometrioid carcinoma	199	Melanoma
140	Clear cell carcinoma	200	Germinoma
141	Adenocarcinoma	201	Other germ cell tumours
142	Other carcinoma	202	Other specified morphology
143	Unspecified carcinoma	203	Unspecified morphology
144	Sex cord-stromal tumour	204 Meninges (C70)	
145	Germ cell tumour	205 Brain (C71)	
146	Other morphology	206 Other parts of central nervous system (C72)	
147	Unspecifeid morphology	207	Spinal cord, cauda equina (C72.0,1)
148 Other female genital organs (C57)		208	Cranial nerves (C72.2–5)
149	Fallopian tube (C57.0)	209	Nervous system, NOS (C72.8–9)
150	Other and unspecified female genital organs (C57.1–9)	210 Thyroid and other endocrine glands (C73–75)	
151 Placenta (C58)		211 Thyroid (C73)	
152 Male genital organs (C60–63)		212	Follicular carcinoma
153 Penis (C60)		213	Papillary carcinoma
154 Prostate (C61)		214	Medullary carcinoma
155 Testis (C62)		215	Anaplastic carcinoma
156	Seminoma	216	Other carcinoma
157	Embryonal carcinoma	217	Unspecified carcinoma
158	Teratoma	218	Sarcoma
159	Choriocarcinoma	219	Other morphology
160	Other morphology	220	Unspecified morphology
161	Unspecified morphology	221 Adrenal gland (C74)	
162 Other male genital organs (C63)		222 Other endocrine (C75)	
163 Urinary tract (C64–68)		223 Lymphoid tissues (C81–96)	
164 Kidney (C64)		224 Non-Hodgkin lymphoma (C82–85,C96)	
165 Renal pelvis (C65)		225	Burkitt lymphoma (C83.7)
166 Ureter (C66)		226	Mycosis fungoides (C84.0)
167 Bladder (C67)		227	Other and unspecified non-Hodgkin lymphoma (C82,C83.0–6,8–9,C84.1–5,C85,C96)
168	Squamous cell carcinoma	228 Hodgkin disease (C81)	
169	Transitional cell carcinoma	229	Lymphocytic predominance (C81.0)
170	Adenocarcinoma	230	Nodular sclerosis (C81.1)
171	Other carcinoma	231	Mixed cellularity (C81.2)
172	Unspecified carcinoma	232	Lymphocytic depletion (C81.3)
173	Sarcoma	233	Other and unspecified type (C81.7,9)
174	Other morphology	234 Immunoproliferative disease (C88)	
175	Unspecified morphology	235 Multiple myeloma (C90)	
176 Other urinary organs (C68)		236 Leukaemia (C91–95)	
177 Eye, brain and central nervous system (C69–72)		237 Lymphoid leukaemia (C91)	
178 Eye (C69)		238	Acute (C91.0)
179	Retinoblastoma	239	Chronic (C91.1)
180	Melanoma	240	Other specified (C91.2–7)
181	Squamous cell carcinoma	241	Unspecified (C91.9)

Table 1 (Contd). List of cancers available in the *CI5VII* and *CI5VIII* programs.**242 Myeloid leukaemia (C92–94)**

243 Acute (C92.0, C93.0, C94.0, C94.2, C94.4–5)

244 Chronic (C92.1, C93.1, C94.1)

245 Other (C92.2–7, C93.2–7, C94.3, C94.7)

246 Unspecified (C92.9, C93.9)

247 Leukaemia, cell unspecified (C95)

248 Acute (C95.0)

249 Chronic (C95.1)

250 Other (C95.2–7)

251 Unspecified (C95.9)

252 Other and unspecified cancers