

## Chapter 28

# Cancer survival in Songkhla, Thailand, 1990–1999

Sriplung H and Prechavittayakul P

### Abstract

The Songkhla registry, besides being hospital-based, has population-based cancer registration data available since 1990. Cancer registration is done by active methods. The registry is contributing data on survival for 36 cancer sites or types registered during 1990–1999. Follow-up has been carried out by passive and active methods with median follow-up ranging from 3–71 months for different cancers. The proportion with histologically verified diagnosis for various cancers ranged between 52–100%; death certificate only (DCO) cases comprised 0–34%; 54–93% of total registered cases were included for survival analysis. Complete follow-up at five years ranged from 50–85% for different cancers. Five-year age-standardized relative survival rates of common cancers were cervix (59%), lung (7%), breast (59%), thyroid (86%), oesophagus (11%), liver (2%), non-melanoma skin (75%), colon (45%) and oral cavity (33%). Five-year relative survival by age group did not reveal any pattern or trend and was fluctuating. A majority were diagnosed with regional spread of disease, and survival decreased with increasing clinical extent of disease.

### Khon Kaen cancer registry

The Songkhla registry is located within the Faculty of Medicine, Prince of Songkhla University. Besides a hospital cancer registry at the University hospital, the data on incident cancer cases based on population-based cancer registration have been available since 1990. The registry contributed data to the quinquennial IARC publication *Cancer Incidence in Five Continents* for the first time in volume VIII [1]. The cancer registration is done by active methods. Case-finding is carried out from 23 sources of registration, comprising government and private sector hospitals, provincial health and population registration offices. The network of cancer registries in Thailand also provides data to the registry. The principal sources of information on cancer cases are hospital and pathology records. The registry caters to a mixed urban and rural population of about 1.1 million with a sex ratio of 1027 females to 1000 males in 1995. The average annual age-standardized incidence rate is 100 per 100 000 among males and 83 per 100 000 among females, with a lifetime cumulative risk of one in 10 of developing cancer in the period 1993–1996. The top-ranking cancers among males are lung followed by oesophagus and oral cavity. Among females, the order is cervix, breast and thyroid.

The registry is contributing data on survival from 36 cancer sites or types for the first time in this volume of the IARC publication on *Cancer Survival in Africa, Asia, the Caribbean and Central America*.

### Data quality indices (Table 1)

The proportion of cases with histologically verified cancer diagnosis in this series is 88%, varying between 52% for liver cancer and 100% for many cancers. The proportion of cases registered as death certificate only (DCO) is 2%, ranging from nil for many cancers to 34% for unspecified leukaemia. Cases excluded for having no follow-up information constitute 15%. The exclusion of cases from the survival analysis is the greatest in unspecified leukaemia (46%) and the least in cancer of the tonsil (7%). Thus, 54–93% of the total cases registered are included in the estimation of the survival probability.

### Outcome of follow-up (Table 2)

Follow-up has been carried out predominantly by passive methods. These include abstraction of cancer mortality information from the vital statistics division records. The abstracted data are matched with the incident cancer database. Unmatched incident cases are then subjected to one or more of the following to obtain the vital status information: repeated scrutiny

of records in the hospitals and linkage with referral system, government free health service and insurance system.

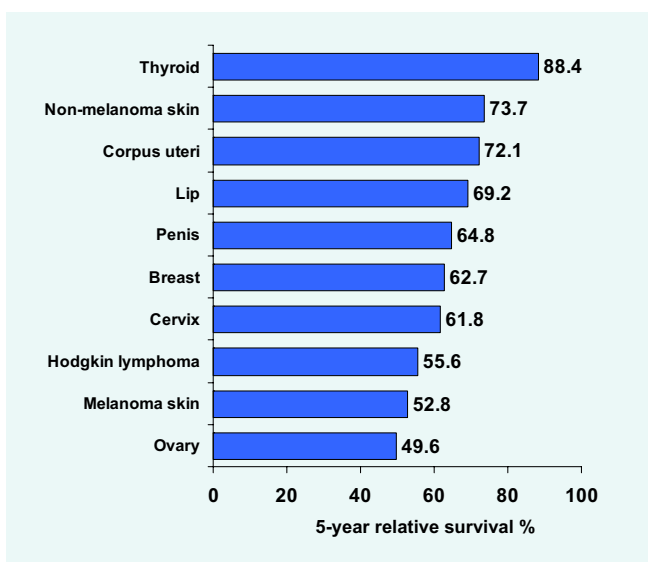
The closing date of follow-up was 31<sup>st</sup> December 2003. The median follow-up ranged from 3 months for liver cancer to 71 months for thyroid cancer. Complete follow-up information at five years from the incidence date ranged from 85% for myeloid leukaemia to 50% for non-melanoma skin cancer. The losses to follow-up occurred evenly in all the time periods of <1 year, 1–3 years, 3–5 years and >5 years and are ascertained to be random.

### Survival statistics

#### All ages and both sexes together (Table 3)

The 5-year relative survival is the highest in thyroid cancer (88%) followed by non-melanoma skin (74%). The lowest survival rate was encountered with liver cancer 2%. Lip (69%) and nasopharynx (46%), among other head and neck cancers, and colon (48%) and rectum (35%), among gastrointestinal cancers, have a higher survival than others. Survival from cancers of the urinary system is 46% for urinary bladder and 36% for kidney. Hodgkin lymphoma had a better survival (56%) than non-Hodgkin (44%). The survival figures for leukaemias are 49% for lymphoid, 15% for myeloid and 25% for unspecified.

**Figure 1a. Top ten cancers (ranked by survival), Songkhla, Thailand, 1990–1999**



The 5-year age-standardized relative survival (ASRS) probability for all ages together is generally less than or similar to the corresponding unadjusted one for most cancers. Also, the 5-year ASRS (0–74 years of age) is generally higher than or similar to the

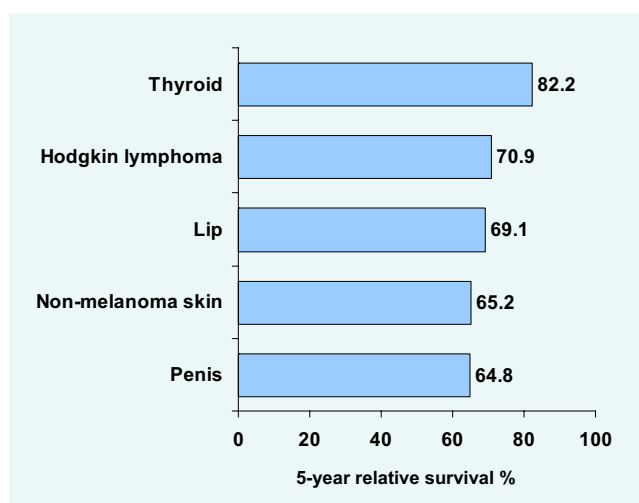
corresponding ASRS (all ages) for a majority of cancers.

### Sex

#### Male (Table 4a)

The top-ranking cancers in terms of 5-year relative survival are thyroid (82%), Hodgkin lymphoma (71%), lip (69%), non-melanoma skin (65%) and penis (65%). Survival probabilities from cancers of the gall bladder, pancreas, bone, Hodgkin lymphoma and multiple myeloma are noticeably higher among males than females.

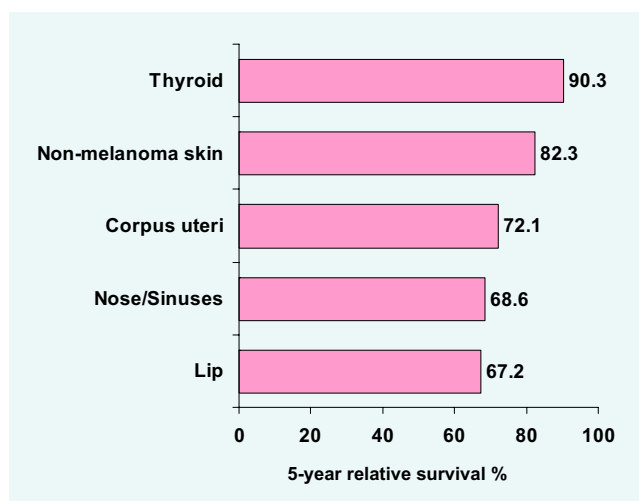
**Figure 1b. Top five cancers (ranked by survival), Male, Songkhla, Thailand, 1990–1999**



#### Female (Table 4a)

The highest 5-year relative survival was observed in thyroid cancer (90%) followed by non-melanoma skin (82%) and corpus uteri (72%). The figures for breast,

**Figure 1c. Top five cancers (ranked by survival), Female, Songkhla, Thailand, 1990–1999**



cervix and ovary are 63%, 62% and 50%, respectively. Survival was distinctly higher among females than males in most cancers of the head and neck, rectum, nose and sinuses, skin, connective tissue, kidney and brain.

*Age group (Table 4b)*

The 5-year relative survival by age group does not reveal any pattern or trend and is observed to be fluctuating.

**Extent of disease (Table 5; Figure 2)**

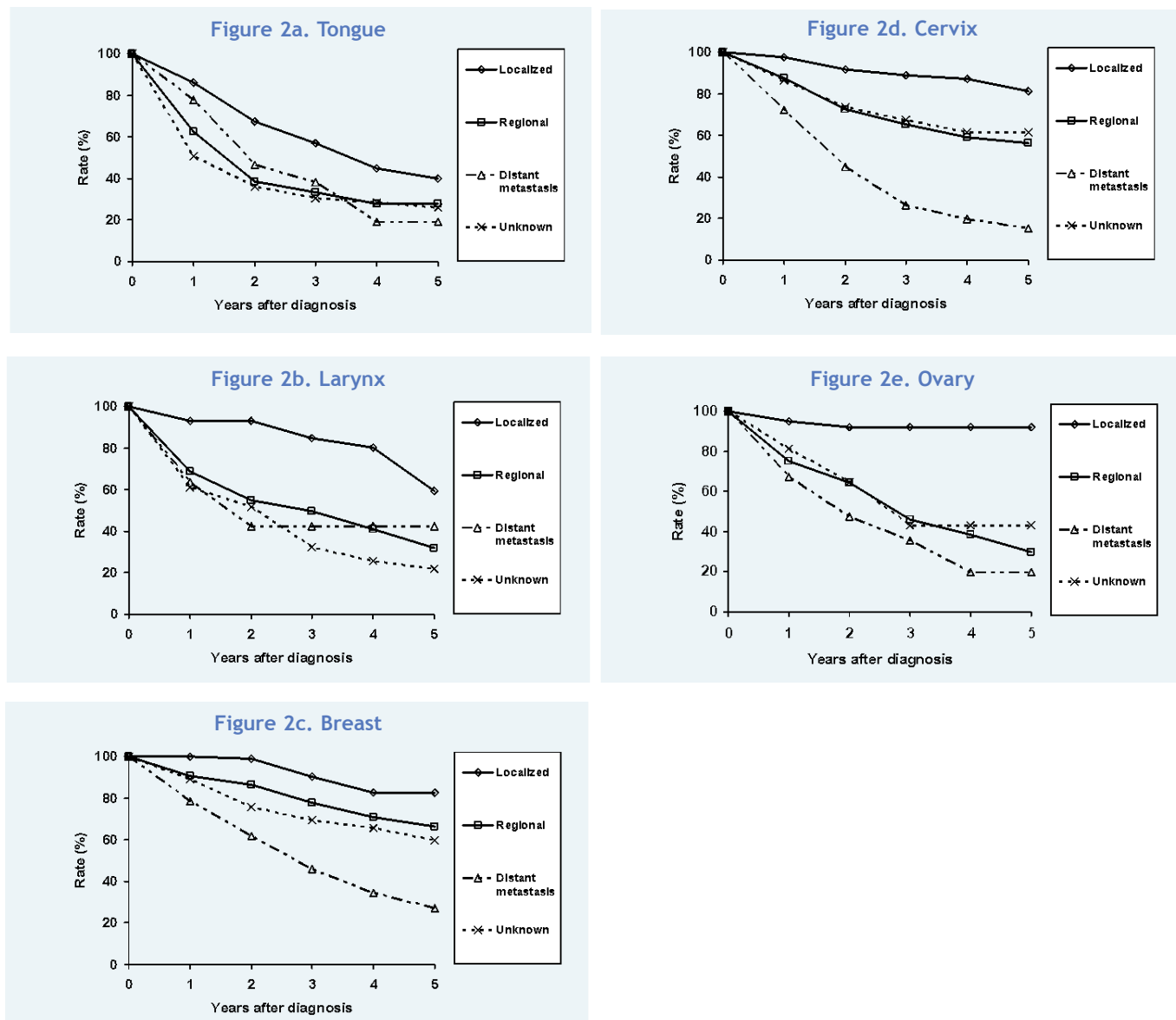
Among the known categories of extent of disease for selected cancers, most cases were diagnosed with

regional spread of disease at the time of diagnosis: tongue (31%), larynx (40%), breast (35%), cervix (55%) and ovary (29%). The extent of disease is unknown in a substantial proportion ranging from 17–42%. The 5-year absolute survival by extent of disease followed the expected pattern: highest for localized cases followed by regional and distant metastasis cases among known categories of extent of disease with the exception of laryngeal cancer.

**References**

1. Parkin DM, Whelan SL, Ferlay J and Storm H. *Cancer Incidence in Five Continents, Vol 1 to VIII: IARC Cancerbase No. 7*. IARC Press, Lyon, 2005.

**Figure 2. Absolute survival (%) from selected cancers by extent of disease, Songkhla, Thailand**



**Table 1. Data quality indices - Proportion of histologically verified and death certificate only cases, number and proportion of included and excluded cases by site: Songkhla, Thailand, 1990–1999 cases followed-up until 2003**

Site	ICD-10	Total registered	%		Excluded cases					Included cases	
			HV	DCO	DCO	Follow-up	Others	Total	%	No.	%
Lip	C00	38	92.1	0.0	0	7	0	7	18.4	31	81.6
Tongue	C01-02	230	93.5	0.0	0	34	0	34	14.8	196	85.2
Oral cavity	C03-06	275	94.5	1.5	4	37	0	41	14.9	234	85.1
Tonsil	C09	86	93.0	1.2	1	5	0	6	7.0	80	93.0
Nasopharynx	C11	193	95.9	0.5	1	24	0	25	13.0	168	87.0
Hypopharynx	C12-13	148	91.2	0.0	0	19	0	19	12.8	129	87.2
Oesophagus	C15	399	83.7	1.5	6	72	0	78	19.5	321	80.5
Stomach	C16	176	88.6	2.8	5	28	0	33	18.8	143	81.3
Colon	C18	314	83.1	3.2	10	57	0	67	21.3	247	78.7
Rectum	C19-20	232	91.4	0.0	0	29	0	29	12.5	203	87.5
Liver	C22	383	52.0	9.1	35	77	0	112	29.2	271	70.8
Gall bladder	C23-24	78	75.6	1.3	1	16	0	17	21.8	61	78.2
Pancreas	C25	109	55.0	3.7	4	21	0	25	22.9	84	77.1
Nose/Sinuses	C30-31	47	95.7	0.0	0	5	0	5	10.6	42	89.4
Larynx	C32	167	88.6	1.8	3	26	0	29	17.4	138	82.6
Lung	C33-34	850	78.0	5.1	43	136	1	180	21.2	670	78.8
Bone	C40-41	44	88.6	9.1	4	7	0	11	25.0	33	75.0
Melanoma of skin	C43	37	100.0	0.0	0	8	0	8	21.6	29	78.4
Other skin	C44	352	99.1	0.6	2	91	1	94	26.7	258	73.3
Connective tissue	C47+C49	80	100.0	0.0	0	13	0	13	16.3	67	83.8
Breast	C50	665	91.6	1.2	8	95	0	103	15.5	562	84.5
Cervix	C53	904	95.2	0.9	8	116	0	124	13.7	780	86.3
Corpus uteri	C54	110	90.0	4.5	5	11	0	16	14.5	94	85.5
Ovary	C56	218	95.9	0.5	1	43	1	45	20.6	173	79.4
Penis	C60	100	91.0	0.0	0	30	0	30	30.0	70	70.0
Prostate	C61	174	90.8	0.6	1	29	0	30	17.2	144	82.8
Kidney	C64	53	84.9	3.8	2	5	0	7	13.2	46	86.8
Urinary bladder	C67	199	89.4	0.0	0	44	0	44	22.1	155	77.9
Brain & nervous system	C70-72	158	55.7	13.9	22	30	0	52	32.9	106	67.1
Thyroid	C73	376	97.1	0.3	1	42	0	43	11.4	333	88.6
Hodgkin lymphoma	C81	41	100.0	0.0	0	5	0	5	12.2	36	87.8
Non-Hodgkin lymphoma	C82-85+C96	353	99.2	0.6	2	32	0	34	9.6	319	90.4
Multiple myeloma	C90	59	100.0	0.0	0	5	0	5	8.5	54	91.5
Lymphoid leukaemia	C91	107	100.0	0.0	0	8	0	8	7.5	99	92.5
Myeloid leukaemia	C92-94	191	100.0	0.0	0	18	0	18	9.4	173	90.6
Leukaemia unspecified	C95	74	66.2	33.8	25	9	0	34	45.9	40	54.1

*HV: histologically verified; DCO: death certificate only*

**Table 2. Number and proportion of cases with complete/incomplete follow-up (in years) and median follow-up (in months) by site: Songkhla, Thailand, 1990–1999 cases followed-up until 2003**

Site	ICD-10	No. of cases included	Complete FU		Incomplete FU: loss to FU*						% with complete FU at 5 years	Median FU (in months)
			Alive/dead at end of FU		% lost to FU: years from diagnosis							
			No.	%	No.	%	< 1	1-3	3-5	> 5		
Lip	C00	31	17	54.8	14	45.2	12.9	6.5	16.1	9.7	64.5	39.6
Tongue	C01-02	196	130	66.3	66	33.7	13.8	8.2	4.6	7.1	73.5	12.2
Oral cavity	C03-06	234	160	68.4	74	31.6	13.2	6.8	4.7	6.8	75.2	12.6
Tonsil	C09	80	58	72.5	22	27.5	13.8	10.0	1.3	2.5	75.0	9.7
Nasopharynx	C11	168	104	61.9	64	38.1	8.9	15.5	6.0	7.7	69.6	26.7
Hypopharynx	C12-13	129	87	67.4	42	32.6	13.2	7.0	6.2	6.2	73.6	13.2
Oesophagus	C15	321	259	80.7	62	19.3	12.8	4.0	1.6	0.9	81.6	7.1
Stomach	C16	143	108	75.5	35	24.5	13.3	5.6	4.9	0.7	76.2	7.1
Colon	C18	247	130	52.6	117	47.4	17.8	12.1	7.7	9.7	62.3	17.3
Rectum	C19-20	203	133	65.5	70	34.5	10.3	9.9	7.9	6.4	71.9	20.3
Liver	C22	271	216	79.7	55	20.3	16.6	2.6	0.4	0.7	80.4	3.0
Gall bladder	C23-24	61	37	60.7	24	39.3	21.3	13.1	4.9	0.0	60.7	9.1
Pancreas	C25	84	65	77.4	19	22.6	15.5	3.6	3.6	0.0	77.4	6.3
Nose/Sinuses	C30-31	42	30	71.4	12	28.6	7.1	14.3	2.4	4.8	76.2	11.3
Larynx	C32	138	92	66.7	46	33.3	13.0	8.0	4.3	8.0	74.6	20.3
Lung	C33-34	670	539	80.4	131	19.6	13.6	3.4	0.9	1.6	82.1	5.0
Bone	C40-41	33	22	66.7	11	33.3	18.2	6.1	6.1	3.0	69.7	15.2
Melanoma of skin	C43	29	16	55.2	13	44.8	13.8	10.3	6.9	13.8	69.0	18.3
Other skin	C44	258	95	36.8	163	63.2	22.9	14.3	12.8	13.2	50.0	29.4
Connective tissue	C47+C49	67	46	68.7	21	31.3	10.4	9.0	6.0	6.0	74.6	10.2
Breast	C50	562	288	51.2	274	48.8	12.1	9.8	11.0	15.8	67.1	40.4
Cervix	C53	780	422	54.1	358	45.9	13.2	12.1	8.6	12.1	66.2	33.5
Corpus uteri	C54	94	44	46.8	50	53.2	16.0	14.9	11.7	10.6	57.4	36.4
Ovary	C56	173	84	48.6	89	51.4	16.2	19.7	8.1	7.5	56.1	23.3
Penis	C60	70	25	35.7	45	64.3	21.4	17.1	10.0	15.7	51.4	22.5
Prostate	C61	144	91	63.2	53	36.8	11.8	10.4	5.6	9.0	72.2	24.9
Kidney	C64	46	24	52.2	22	47.8	19.6	13.0	6.5	8.7	60.9	11.1
Urinary bladder	C67	155	89	57.4	66	42.6	11.0	11.6	9.7	10.3	67.7	28.8
Brain & nervous system	C70-72	106	65	61.3	41	38.7	11.3	16.0	6.6	4.7	66.0	11.2
Thyroid	C73	333	213	64.0	120	36.0	7.5	9.3	7.8	11.4	75.4	71.0
Hodgkin lymphoma	C81	36	14	38.9	22	61.1	16.7	13.9	16.7	13.9	52.8	32.6
Non-Hodgkin lymphoma	C82-85+C96	319	190	59.6	129	40.4	17.9	8.5	6.3	7.8	67.4	11.1
Multiple myeloma	C90	54	38	70.4	16	29.6	13.0	9.3	5.6	1.9	72.2	15.2
Lymphoid leukaemia	C91	99	69	69.7	30	30.3	10.1	8.1	4.0	8.1	77.8	24.3
Myeloid leukaemia	C92-94	173	140	80.9	33	19.1	6.4	5.8	2.3	4.6	85.5	6.6
Leukaemia unspecified	C95	40	31	77.5	9	22.5	15.0	2.5	5.0	0.0	77.5	5.0

FU: follow-up; \* non-random

**Table 3. Comparison of 1-, 3- and 5-year absolute and relative survival and 5-year age-standardized relative survival by site: Songkhla, Thailand, 1990–1999 cases followed-up until 2003**

Site	ICD-10	Cases included	% Absolute survival			% Relative survival			% ASRS at 5-years	
			1-year	3-year	5-year	1-year	3-year	5-year	all ages	0-74 years
Lip	C00	31	89.7	74.0	58.3	92.3	81.3	69.2	74.9	77.1
Tongue	C01-02	196	63.3	37.2	28.7	64.3	38.9	30.9	31.3	31.4
Oral cavity	C03-06	234	62.9	34.6	26.7	64.1	36.6	29.4	33.4	35.3
Tonsil	C09	80	55.7	23.5	10.7	56.5	24.5	11.4	12.1	13.5
Nasopharynx	C11	168	83.2	57.0	44.3	83.7	58.0	45.6	40.8	47.4
Hypopharynx	C12-13	129	65.1	36.8	28.0	66.2	38.7	30.5	24.0	24.0
Oesophagus	C15	321	40.4	10.4	7.6	41.1	11.0	8.4	10.5	9.9
Stomach	C16	143	44.6	20.6	8.7	45.2	21.5	9.3	10.1	8.8
Colon	C18	247	77.8	51.4	45.0	78.9	53.6	48.3	45.4	52.8
Rectum	C19-20	203	74.0	44.8	33.2	74.9	46.4	35.4	36.2	31.9
Liver	C22	271	29.2	8.1	2.2	29.4	8.3	2.3	2.2	2.5
Gall bladder	C23-24	61	59.6	25.1	10.0	60.5	26.1	10.7	11.0	14.4
Pancreas	C25	84	41.9	15.0	12.2	42.5	15.5	13.0	8.7	15.9
Nose/Sinuses	C30-31	42	50.6	33.5	33.5	51.2	34.5	35.2	26.0	25.9
Larynx	C32	138	71.3	51.6	35.9	72.5	54.1	38.9	36.3	44.6
Lung	C33-34	670	36.3	11.0	7.2	36.7	11.4	7.6	6.9	8.6
Bone	C40-41	33	73.3	45.6	31.9	73.5	45.9	32.3	27.5	27.5
Melanoma of skin	C43	29	74.1	55.1	49.8	74.9	56.9	52.8	56.1	53.8
Other skin	C44	258	88.2	75.6	65.2	90.0	80.8	73.7	74.8	76.6
Connective tissue	C47+C49	67	57.5	42.4	32.7	57.9	43.4	34.2	29.9	32.0
Breast	C50	562	90.0	72.5	61.2	90.4	73.6	62.7	59.3	62.4
Cervix	C53	780	88.7	68.7	60.4	89.1	69.6	61.8	58.9	61.3
Corpus uteri	C54	94	85.0	77.5	69.7	85.4	79.0	72.1	69.2	72.5
Ovary	C56	173	81.1	56.2	48.6	81.5	57.0	49.6	41.5	48.7
Penis	C60	70	85.6	68.3	58.7	86.8	72.0	64.8	65.3	64.6
Prostate	C61	144	80.8	51.9	32.1	83.2	57.0	38.1	39.0	32.7
Kidney	C64	46	65.9	40.1	35.1	66.5	41.1	36.4	35.3	37.0
Urinary bladder	C67	155	80.9	58.8	41.4	82.3	62.0	45.5	45.6	45.9
Brain & nervous system	C70-72	106	58.0	37.9	37.9	58.2	38.3	38.4	32.0	31.1
Thyroid	C73	333	93.8	89.0	86.6	94.2	90.1	88.4	85.5	86.9
Hodgkin lymphoma	C81	36	84.8	70.5	54.4	85.3	71.6	55.6	53.1	55.9
Non-Hodgkin lymphoma	C82-85+C96	319	63.9	46.5	41.8	64.5	47.8	43.8	45.6	47.7
Multiple myeloma	C90	54	68.3	33.4	27.6	68.9	34.4	29.0	28.9	32.3
Lymphoid leukaemia	C91	99	70.2	54.3	48.1	70.5	54.7	48.6	34.5	36.5
Myeloid leukaemia	C92-94	173	47.5	25.1	14.4	47.8	25.6	14.7	13.4	15.4
Leukaemia unspecified	C95	40	48.6	29.0	24.6	48.8	29.3	24.8	17.0	17.0

ASRS: age-standardized relative survival

Table 4a. Site-wise number of cases, 5-year absolute and relative survival by sex: Songkhla, Thailand, 1990–1999 cases followed-up until 2003

Site	ICD-10	Cases included	Male			Female		
			% 5-year survival			% 5-year survival		
			No.	Abs	Rel	No.	Abs	Rel
Lip	C00	31	8	57.1	69.1	23	56.9	67.2
Tongue	C01-02	196	161	23.6	25.5	35	54.6	58.6
Oral cavity	C03-06	234	164	23.8	25.9	70	33.8	38.1
Tonsil	C09	80	71	5.8	6.2	9	46.9	48.7
Nasopharynx	C11	168	117	40.3	41.6	51	53.8	54.8
Hypopharynx	C12-13	129	114	25.1	27.4	15	48.2	50.9
Oesophagus	C15	321	234	6.8	7.6	87	9.2	9.9
Stomach	C16	143	96	8.9	9.5	47	8.7	9.4
Colon	C18	247	136	42.8	45.9	111	48.3	51.8
Rectum	C19-20	203	119	29.0	31.0	84	38.7	41.2
Liver	C22	271	225	2.2	2.4	46	0.0	0.0
Gall bladder	C23-24	61	23	36.8	39.9	38	4.5	4.7
Pancreas	C25	84	51	16.7	17.5	33	4.0	4.4
Nose/Sinuses	C30-31	42	29	20.3	21.7	13	66.7	68.6
Larynx	C32	138	129	36.0	39.1	9	33.0	34.7
Lung	C33-34	670	482	6.4	6.8	188	9.3	9.8
Bone	C40-41	33	22	39.6	40.0	11	14.8	15.1
Melanoma of skin	C43	29	14	38.0	40.7	15	57.2	60.1
Other skin	C44	258	134	58.7	65.2	124	71.8	82.3
Connective tissue	C47+C49	67	40	29.3	30.8	27	39.8	41.3
Breast	C50	562	6	30.0	32.1	556	61.6	63.1
Cervix	C53	780				780	60.4	61.8
Corpus uteri	C54	94				94	69.7	72.1
Ovary	C56	173				173	48.6	49.6
Penis	C60	70	70	58.7	64.8			
Prostate	C61	144	144	32.1	38.1			
Kidney	C64	46	30	24.5	25.6	16	58.6	60.6
Urinary bladder	C67	155	122	40.9	44.8	33	44.0	49.0
Brain & nervous system	C70-72	106	57	31.4	31.9	49	47.9	48.2
Thyroid	C73	333	78	79.8	82.2	255	88.6	90.3
Hodgkin lymphoma	C81	36	27	69.0	70.9	9	35.9	36.3
Non-Hodgkin lymphoma	C82-85+C96	319	193	39.4	41.3	126	45.9	47.9
Multiple myeloma	C90	54	30	33.9	35.9	24	16.8	17.2
Lymphoid leukaemia	C91	99	51	44.0	44.3	48	52.7	53.4
Myeloid leukaemia	C92-94	173	90	15.5	15.9	83	12.8	13.1
Leukaemia unspecified	C95	40	19	23.5	23.7	21	25.6	25.9

Abs: absolute survival; Rel: relative survival



**Table 4b. Site-wise number of cases and relative survival by age group: Songkhla, Thailand, 1990–1999 cases followed-up until 2003**

Site	ICD-10	Cases included	Number of cases by age group					Relative survival by age group				
			< 45	45-54	55-64	65-74	> 75	% 5-year survival				
								< 45	45-54	55-64	65-74	> 75
Lip	C00	31	0	1	6	5	19			77.9	76.8	65.2
Tongue	C01-02	196	10	25	62	62	37		39.7	29.0	30.4	32.6
Oral cavity	C03-06	234	16	21	48	88	61	58.1	28.7	33.8	28.3	19.6
Tonsil	C09	80	9	11	19	29	12	43.4	0.0	14.3	10.3	
Nasopharynx	C11	168	64	36	37	24	7	52.2	56.6	34.0	30.1	0.0
Hypopharynx	C12-13	129	4	19	26	51	29	0.0	31.0	16.1	49.3	11.8
Oesophagus	C15	321	7	30	105	114	65	27.6	8.8	9.5	4.4	12.0
Stomach	C16	143	18	24	38	35	28	0.0	0.0	5.1	10.9	12.0
Colon	C18	247	41	31	54	58	63	54.9	61.8	44.9	54.1	32.9
Rectum	C19-20	203	29	26	67	48	33	32.6	34.4	43.7	20.7	43.8
Liver	C22	271	59	54	69	64	25	7.0	0.0	3.5	0.0	0.0
Gall bladder	C23-24	61	7	6	22	11	15	0.0		10.7	40.7	0.0
Pancreas	C25	84	11	12	25	21	15	15.2	25.6	23.4	0.0	0.0
Nose/Sinuses	C30-31	42	13	3	13	6	7	39.9	0.0	58.4		26.1
Larynx	C32	138	7	21	35	50	25	52.7	36.6	38.3	55.3	0.0
Lung	C33-34	670	57	91	217	212	93	14.2	11.3	6.3	7.4	2.4
Bone	C40-41	33	30	1	1	1	0	32.6	102.2	0.0	0.0	
Melanoma of skin	C43	29	6	3	5	12	3	84.1		51.3	41.7	71.0
Other skin	C44	258	28	31	53	62	84	88.5	80.4	71.5	69.3	71.2
Connective tissue	C47+C49	67	30	12	12	8	5	46.9	24.9	13.8	40.3	26.0
Breast	C50	562	200	174	106	56	26	64.5	65.0	63.7	55.2	46.0
Cervix	C53	780	304	200	160	84	32	69.6	59.7	60.2	49.6	36.8
Corpus uteri	C54	94	14	33	26	19	2	67.2	69.0	82.9	69.9	59.0
Ovary	C56	173	61	45	42	18	7	72.8	46.5	34.8	38.3	0.0
Penis	C60	70	12	10	19	14	15	71.9	65.9	56.5	65.4	66.6
Prostate	C61	144	0	4	17	45	78		0.0	32.4	38.3	42.4
Kidney	C64	46	13	6	14	8	5	51.3	79.1	17.8	29.5	
Urinary bladder	C67	155	13	17	38	46	41	57.4	47.0	40.6	46.1	45.6
Brain & nervous system	C70-72	106	74	9	17	4	2	44.1		32.6	0.0	
Thyroid	C73	333	181	51	53	30	18	100.8	88.4	74.7	66.4	37.3
Hodgkin lymphoma	C81	36	17	11	5	2	1	56.7	64.6	55.2		0.0
Non-Hodgkin lymphoma	C82-85+C96	319	103	51	62	54	49	57.4	52.4	38.0	32.9	28.6
Multiple myeloma	C90	54	8	14	13	15	4	31.6	24.2	49.2	15.2	0.0
Lymphoid leukaemia	C91	99	86	4	2	4	3	51.8	72.6	0.0	0.0	
Myeloid leukaemia	C92-94	173	80	28	29	26	10	18.9	14.1	21.1	0.0	0.0
Leukaemia unspecified	C95	40	33	3	1	3	0	28.5		0.0	0.0	



Table 5. Proportion of cases and 5-year absolute survival by extent of disease and site: Songkhla, Thailand, 1990–1999

Site	ICD-10	Cases included	% of cases by extent of disease				% 5-year absolute survival			
			Localized	Regional	Dist. met.	Unknown	Localized	Regional	Dist. met.	Unknown
Tongue	C01-02	196	19.9	30.6	7.1	42.3	40.0	27.9	19.1	26.0
Larynx	C32	138	21.0	39.9	8.7	30.4	59.5	31.9	42.4	21.9
Breast	C50	562	17.1	34.7	14.4	33.8	82.8	66.2	27.0	59.6
Cervix	C53	780	22.3	54.6	5.8	17.3	81.2	56.3	15.4	61.3
Ovary	C56	173	24.3	28.9	12.7	34.1	92.1	30.0	19.8	43.0

*Dis. met.:* distant metastasis

